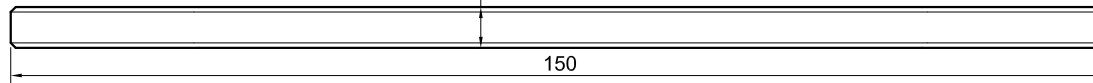
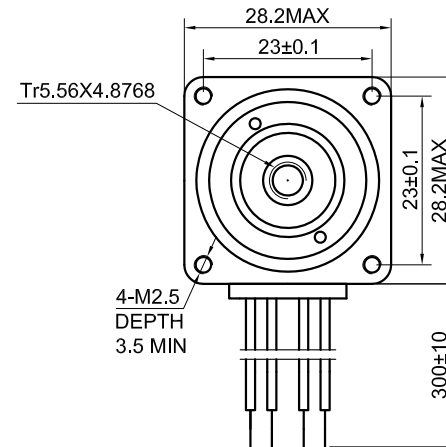


UL1569
AWG26

Tr5.56X4.8768



150



Tr5.56X4.8768

4-M2.5
DEPTH
3.5 MIN

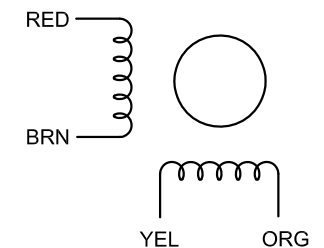
300±10

SPECIFICATION	CONNECTION	BIPOLAR
AMPS/PHASE		0.75
RESISTANCE/PHASE(Ohms)@25°C		3.20±10%
INDUCTANCE/PHASE(mH)@1KHz		2.00±20%
HOLDING TORQUE(Nm)[lb-in]		0.08[0.71]
LINEAR TRAVEL/STEP(mm)		0.024384
STEP ANGLE(°)		1.80
STEP ACCURACY(NON-ACCUM)		±5.00%
ROTOR INERTIA(g-cm ²)		9.00
WEIGHT(Kg)[lb]		0.12[0.26]
TEMPERATURE RISE:MAX.80°C (MOTOR STANDSTILL;FOR 2PHASE ENERGIZED)		
AMBIENT TEMPERATURE -10°C~50°C[14°F~122°F]		
INSULATION RESISTANCE 100 Mohm (UNDER NORMAL TEMPERATURE AND HUMIDITY)		
INSULATION CLASS B 130°C[266°F]		
DIELECTRIC STRENGTH 500VAC FOR 1MIN.(BETWEEN THE MOTOR COILS AND THE MOTOR CASE)		
AMBIENT HUMIDITY MAX.85%(NO CONDENSATION)		

TYPE OF CONNECTION (EXTERN)		MOTOR	
PIN NO	BIPOLAR	LEADS	WINDING
1	A —	RED	
2	A' —	BRN	
3	B —	YEL	
4	B' —	ORG	

FULL STEP 2 PHASE-Ex ,
WHEN FACING MOUNTING END (X)

STEP	A	B	A'	B'		CCW
1	+	+	-	-		
2	-	+	+	-		
3	-	-	+	+		
4	+	-	-	+		



	APVD		10.19.2021
	CHKD		
1:1	DRN		
SCALE	SIGNATURE		DATE

STEPPER MOTOR

11N13S0754QE-150RS
(11LS13-0754N-150C)