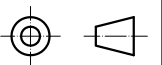
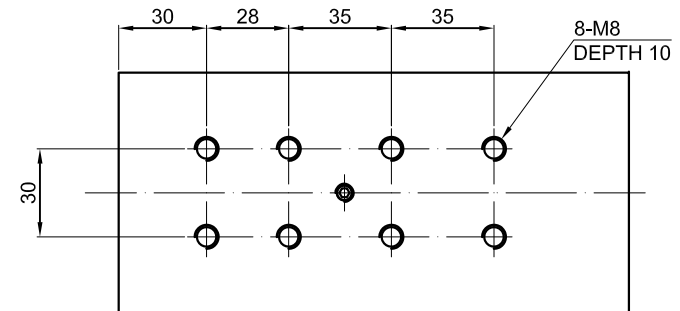


↑  
B

SPECIFICATION	VALUE
POWER (Kw)	2.2
VOLTAGE (VAC)	220
RATED CURRENT (A)	10
MAXIMUM SPEED (RPM)	18000
FREQUENCY (Hz)	300
NUT MODEL	ER25
COLLET (mm)	Ø6、Ø6.35、Ø12、Ø12.7
RUNOUT OFF (mm)	LESS THAN 0.005
BEARINGS	2x7007(P4) + 2x7002C(P4)
COOLING	AIR COOLED
MATERIAL	STAINLESS STEEL
LUBRICATION	GREASE
WEIGHT (Kg) [lb]	7.5 [16.53]

B VIEW BOTTOM OF SHELL



	mm	APVD		5.6.2019
	UNIT	CHKD		
	3:1	DRN		
	SCALE	SIGNATURE		DATE

**SPINDLE MOTOR**

**GDZ93×82-2.2B4**