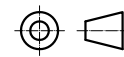


SPECIFICATION	CONNECTION	VALUE
GEAR RATIO		50
EFFICIENCY		94.00%
BACKLASH@NO-LOAD(arcmin)		<=20
MAX.PERMISSIBLE TORQUE(Nm)[lb-in]		25.00[221.27]
MOMENT PERMISSIBLE TORQUE(Nm)[lb-in]		50.00[442.54]
GEARBOX MATCHING MOTOR'S INPUT SHAFT LENGTH (mm)		21~24
NOISE(dB)		<=60
WATERPROOF RATING		IP54
LIFE(h)		20000
AMBIENT TEMPERATURE		-10°C~90°C[14°F~194°F]



	APVD		3.2.2021
	CHKD		
2:3	DRN		
SCALE	SIGNATURE		DATE

**PLANETARY GEARBOX**

**TQEG23-G50-D6**